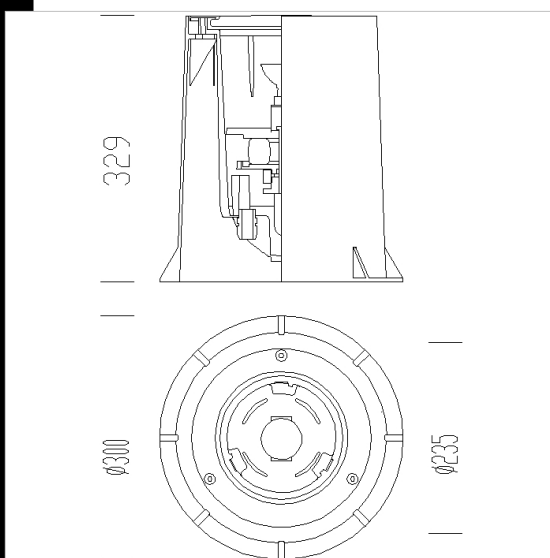




### 1640 Minifloor - swivelling

**HOUSING:** In die-cast aluminium with AISI 316 stainless steel frame.  
**REFLECTOR:** Swivelling, in anodised and polished aluminium.  
**DIFFUSER:** Twin protection, one in 5 mm thick smooth, clear, hardened glass mm and one in 12 mm resistant to thermal shock, impact and loads (max. 2000 Kg).  
**PAINTING:** With polyester powder, silver, upon chromate treatment, resistant to corrosive and saline environments.  
**LAMPHOLDER:** In ceramics with silver-plated contacts.  
**ELECTRIC GEAR:** 230V/50Hz power supply. Hard wire, 1 sq mm cross-section and PVC-HT sheath, resistant up to 90°C according to CEI 20-20 standards.  
**2P terminal block with maximum allowed lead cross-section of 4 sq mm.**  
**STANDARD SUPPLY:** Versions complete with clamping frame. Box for recess mounting supplied as standard.  
**EQUIPMENT:** Silicone rubber gasket. Removable electric control gear tray for easy maintenance.  
 Two diam. ½ inch gas thread f.g. nylon cable glands.  
**REGULATIONS:** Manufactured according to applicable EN60598 - CEI 34-21 standards. Level of protection in compliance with the EN60529 standard.

- Download**
- DXF 2D  
- 1640.dxf
  - 3DS  
- 1640\_minifloor.3ds
  - 3DM  
- 1640\_minifloor.3dm
  - Montaggi  
- minifloor.pdf  
- 369\_399 montaggio.dxf



Code	Gear	Kg	Lumen-K-CRI	WTot	Base	Colour
530722-00	CTL	5.43	ALO 50-950cd-2900K-Ra 100	0 W	GY6.35	STAINLESS STEEL
530720-00	S	4.63	PAR30 75W-2200cd-3000K-Ra 1a	0 W	E27	STAINLESS STEEL
530723-00	CTL	5.45	DICR 35 IRC-4100cd-3000K-	0 W	GU5.3	STAINLESS STEEL
530721-00	CTL	5.50	AR111 50IRC-5800cd-3000K-Ra 100	0 W	G53	STAINLESS STEEL

#### Accessories



- 369 connector



- 399 Connector for solid line

The reported luminous flux is the flux emitted by the light source with a tolerance of ± 10% compared to the indicated value. The W tot column indicates the total wattage absorbed by the system without exceeding 10% of the indicated