



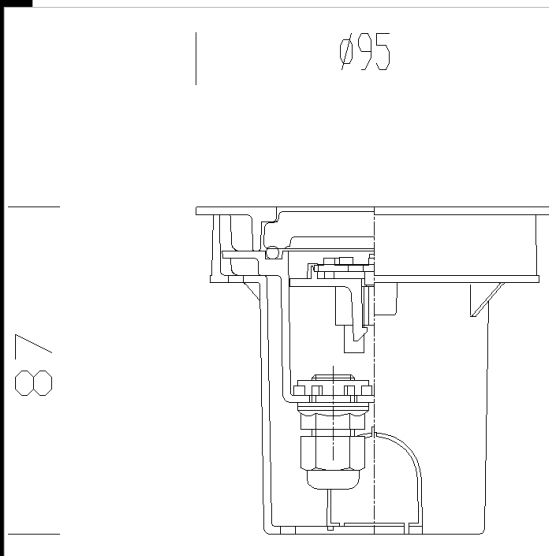
Download

DXF 2D
- 1622.dxf
Montaggi
- 1622-1637-1638.pdf



1622 Starled - round

Housing: Vandal resistant fibreglass nylon,
Frame: Die-cast aluminium.
Diffuser: Frosted glass, resistant to impact and thermal shock .
Coating: the standard liquid immersion coating consists of a first metal surface pre-treatment stage, a successive epoxy cataphoresis corrosion and salt resistant coating, and a final layer of bi-component acrylic liquid UV-stabilised coating.
Electric gear: 24V 230V/50Hz power supply with external transformer acc.179.Wire insulation class 3.
Equipment: Rubber gasket.
Regulations: Manufactured in compliance with EN60598 - CEI 34 - 21 standards. The level of protection complies with EN 60529 standard.
Lamp: 4000K-120° (other colours available on request). Separate transformer required (code 997663 max 26 spot)



Code	Gear	Kg	Lumen Output-K-CRI	WTot	Colour
530691-00	CLD S+L	0.15	LED-28lm-4000K-CRI>80	1 W	GRAPHITE
530690-00	CLD S+L	0.16	LED-28lm-4000K-CRI>80	1 W	GREY9007

Accessories



- 179 wrightight box CC-IP677

The reported luminous flux is the flux emitted by the light source with a tolerance of ± 10% compared to the indicated value. The W tot column indicates the total wattage absorbed by the system without exceeding 10% of the indicated