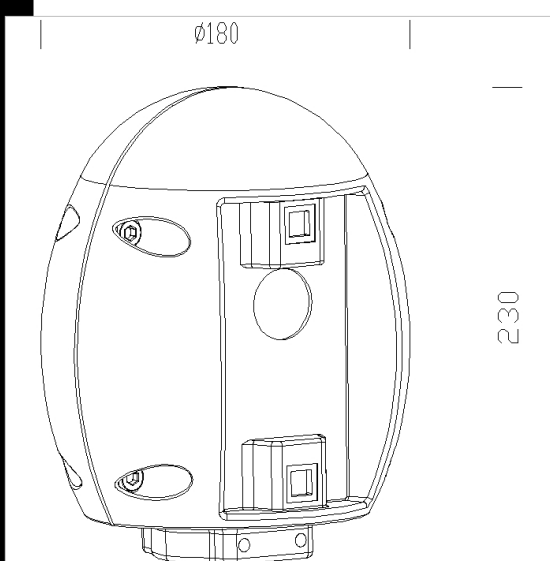


### 300 Oliva

Made of aluminium. For installation of arms acc.210/301 on ø 60 poles

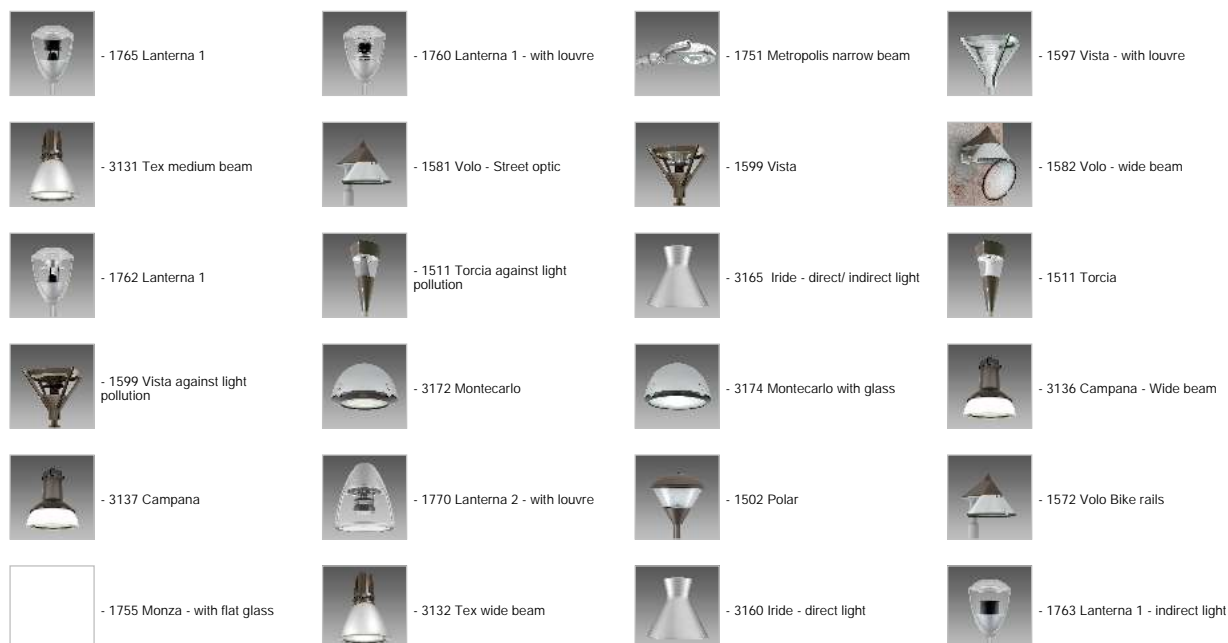
#### Download

- DXF 2D
- acc\_300.dxf
- 3DS
- disano\_300.3ds
- 3DM
- disano\_300.3dm
- Montaggi
- acc\_300-301.pdf



Code	Kg	WTot	Colour
426970-00	2,56	0 W	GREY9007
426971-00	2,62	0 W	GRAPHITE

#### Prodotti



The reported luminous flux is the flux emitted by the light source with a tolerance of ± 10% compared to the indicated value. The W tot column indicates the total wattage absorbed by the system without exceeding 10% of the indicated

Prodotti

	- 1595 Vista - with opal diffuser		- 1752 Metropolis wide beam		- 3164 Iride - direct scattered light		- 1214 Clima
	- 3114 Ghost - direct and indirect light		- 1598 Vista - indirect light		- 1771 Lanterna 2 - with diffuser		- 1504 Clima
	- 1756 Monza HP - high performance		- 3185 Sforza Ø500		- 3187 Sforza Ø600		- 3190 Sforza Ø500 - bike trails
	- 1513 Torcia LED COB		- 1766 Lanterna LED		- 1753 Metropolis bike trails		- 3162 Iride - direct light
	- 1514 Clima for zona 1		- 3171 Montecarlo - asymmetric		- 1598 Vista		- 3182 Sforza Ø500 - pedestrian crossings left
	- 3184 Sforza Ø500 - pedestrian crossings right		- 3167 Iride - LED direct light		- 3175 Montecarlo LED - wide beam - elliptical lenses		- 1573 Volo LED wide beam
	- 1593 Volo LED - bike trails		- 1517 Clima LED		- 3223 Sforza LED - asymmetric		- 3142 Campana LED
	- 1518 Clima LED against light		- 1202 Polar		- 1512 Bastia - LED		- 1221 Bastia
	- 1750 Metropolis		- 3166 Iride dir/ind LED RGB		- 3189 Sforza Ø500		- 3141 Campana LED
	- 3752 Metropolis - LED		- 3751 Metropolis - LED - wide		- 1756 Monza FX		- 3146 Campana LED
	- 1204 Clima		- 1764 Lanterna 1 - indirect light				

The reported luminous flux is the flux emitted by the light source with a tolerance of  $\pm 10\%$  compared to the indicated value. The W tot column indicates the total wattage absorbed by the system without exceeding 10% of the indicated