

Download

DXF 2D

- 1147c.dxf

3DS

- 1147d_star.3ds

3DM

- 1147d_star.3dm

Montaggi

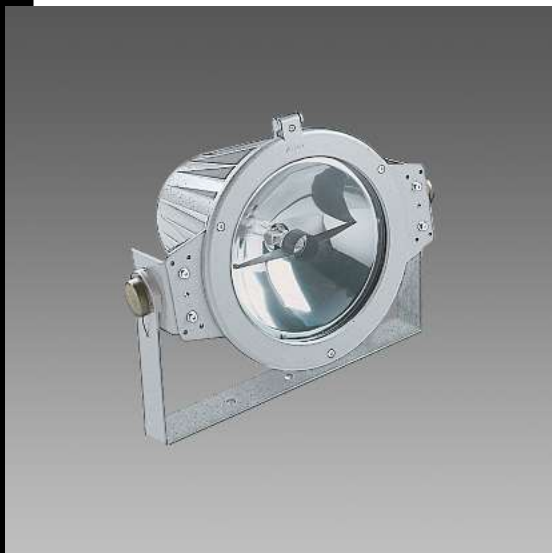
- 1147_star_tn.pdf

- assieme.dxf

- rotaz.dxf

- int_sl.dxf

- sc_gon.dxf



1147 Star - narrow beam

Housing/frame: In diecast aluminium, with cooling fins.

Reflector: In high gloss 99.85 anodized aluminium, 6 micron thick.

Diffuser: Tempered protective flat glass, 5 mm thick, thermal shock and impact resistant (UNI7142 tests - British standard 3193).

Painting: Epoxy cationic electrocoating, black, upon chromate treatment, resistant to corrosive and saline environments. Second finish coat with environment-friendly acrylic resin, sandblasted silver, UV stabilized.

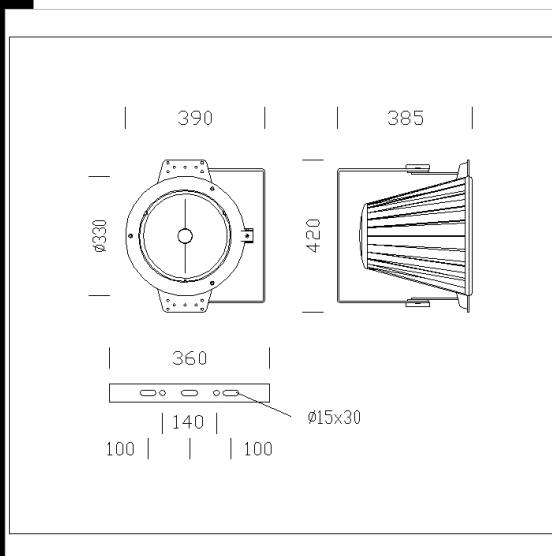
Lampholder: In ceramics, with silver-plated contacts. Socket G12.

Electric gear: 230V/50Hz power supply. Silicone wire terminated with clamps in admiralty brass, fiber glass braid, 1 sqmm cross-section. Nylon 2P terminal block with maximum allowed lead cross-section of 2.5 sqmm.

Equipment: Silicone rubber gasket. Cable gland in f.g. nylon Ø 1/2 gas thread. Retained steel screws with special anticorrosion antigripping treatment. Stainless steel bracket with protractor scale. The hinge-opening front frame stays hooked to the housing for easy maintenance.

Regulations: Produced according to applicable EN60598-1 CEI 34 - 21 standards, IP65IK08 degree of protection according to EN 60529 standards. They have obtained the ENEC European certification of conformity. Insulation class II.

Wind surface: 966 sqcm.



Code	Gear	Kg	Lumen-K-CRI	WTot	Base	Colour
412825-00	CNR-L	10.41	JM-T 150-13000lm-4200K-Ra 2a	166 W	G12	GREY9007

Accessories



- 148 baffle louver



- 134 coloured filter



- 147 conveyor

The reported luminous flux is the flux emitted by the light source with a tolerance of $\pm 10\%$ compared to the indicated value. The W tot column indicates the total wattage absorbed by the system without exceeding 10% of the indicated