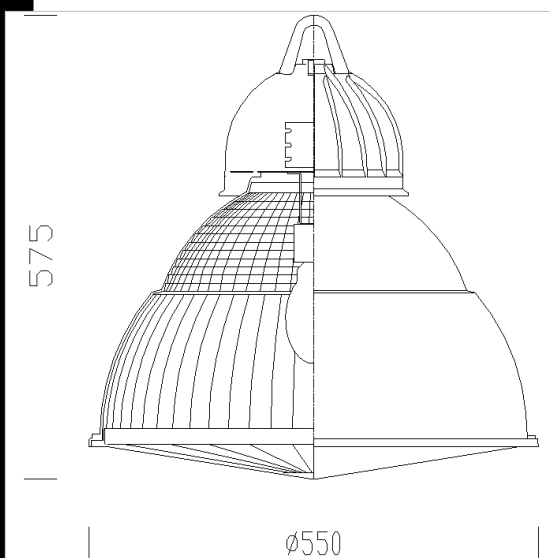




3120 Ghost - clear diffuser

Housing: In die-cast aluminium, with wide cooling fins.
 Diffuser: All in clear polycarbonate. Prismatic inside for better light control. Smooth outside, dust-proof and impact-resistant, V2 self-extinguishing and UV stabilised.
 Coating: Multistage process. Stage 1: gris epoxy cationic electrocoating, resistant to corrosion and briny mist. Stage 2: UV-stabilising priming. Stage 3: sandblasted silver acrylic finishing.
 Lampholder: In ceramics, with silver-plated or polycarbonate contacts.
 Electric gear: 230V/50Hz power supply. Silicone flexible wire terminated with quick-connect admiralty brass clamps, with fibreglass braid, 1.5 sqmm cross-section. 2P+T terminal block with maximum allowed lead cross section of 2,5 sqmm.
 Standard supply: Removable gear tray.
 Equipment: Suspension hook. Rubber cable gland Ø ½" gas thread (cable min Ø 9, max Ø12).
 Regulations: Produced according to applicable EN60598-1 CEI 34 - 21 standards, it has been granted the ENEC European Certificate of Conformity. IP43IK08 degree of protection according to EN 60529 standards. This product can be installed on normally inflammable surfaces.

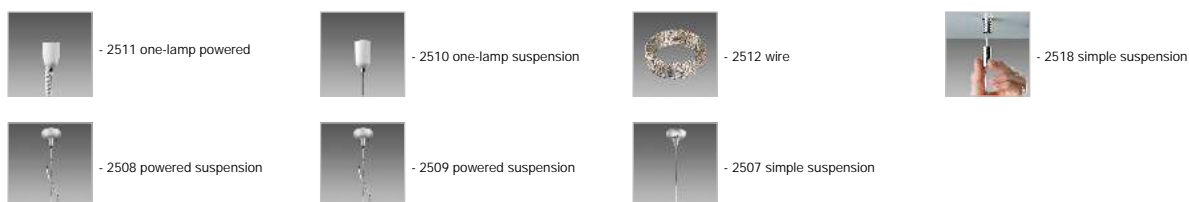


Download

- DXF 2D
- 3120_1_2.dxf
- 3DS
- 3121_ghost.3ds
- 3DM
- 3121_ghost.3dm
- Montaggi
- ghostcat.dxf
- ghostcan.dxf
- ap_diff.dxf
- 3110-11-12-13-14-20-21-22-23-24_ghost.pdf

Code	Gear	Kg	Lumen-K-CRI	WTot	Base	Colour
322938-00	CELL	6.10	FLC 1x70T/E-5200lm-4000k-Ra 1b	73 W	GX24q-6	GREY9007
322937-00	CNR-L	6.68	JM-E 150-13300lm-3200K-Ra 1b	157 W	E27	GREY9007
322935-00	CNR-L	5.00	CDO-TT 150-13500lm-2800K-Ra 1b	157 W	E40	GREY9007

Accessories



The reported luminous flux is the flux emitted by the light source with a tolerance of ± 10% compared to the indicated value. The W tot column indicates the total wattage absorbed by the system without exceeding 10% of the indicated