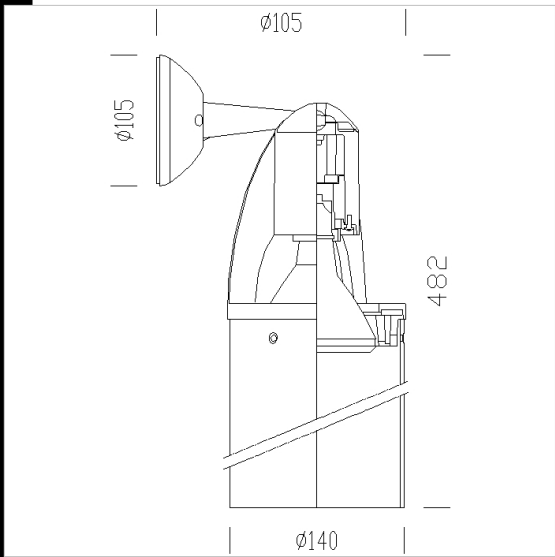




**Download**

DXF 2D  
- matrix\_1.dxf

Montaggi  
- MATRIX 07-06.pdf



**Matrix 1**

Housing: In die-cast aluminium with central shaft to carry cables.  
Reflector: Polished anodised aluminium.  
Diffuser: Tempered glass .  
Coating: with a UV-stabilised powder acrylic-resin paint  
Lampholder: Ceramic with silver-plated contacts  
Electric gear: 230 V/50 Hz power supply with electronic ballast or 12V transformer. Silicone wire with fibreglass braid, cross-section 1.0 sqmm.  
Equipment: Supplied with an aiming bar .  
Regulations: Manufactured in accordance with EN 60598-1-CEI 34.21 standards. Degree of protection in accordance with EN60529 standards.

Code	Gear	Kg	Lumen-K-CRI	WTot	Base	Colour
22201171-00	S	1.75	PAR30/FLC23-1500lm-4000K-Ra 1b	0 W	E27	SILVER

The reported luminous flux is the flux emitted by the light source with a tolerance of  $\pm 10\%$  compared to the indicated value. The W tot column indicates the total wattage absorbed by the system without exceeding 10% of the indicated