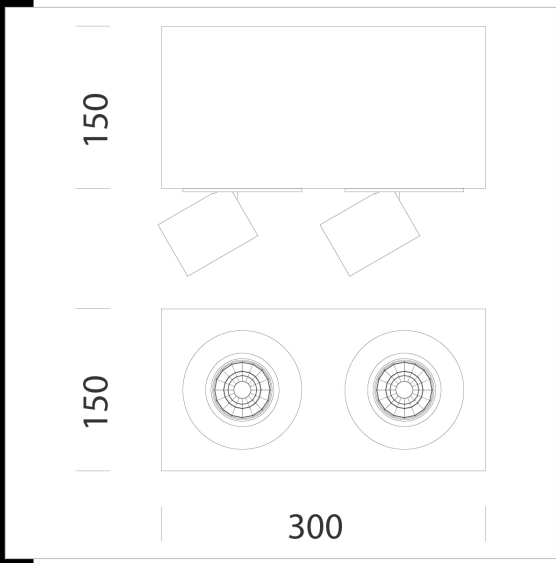
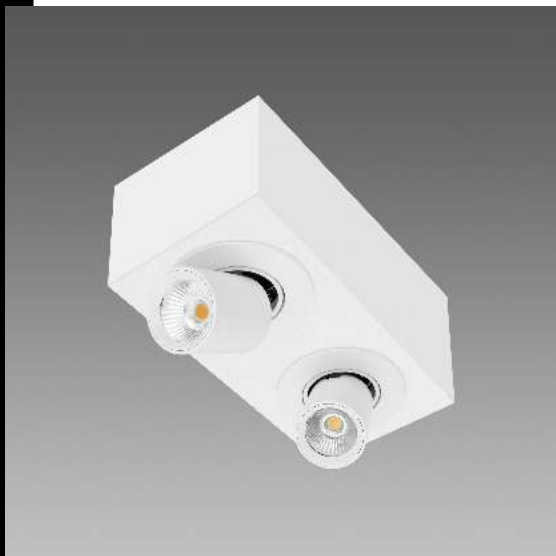


Download
 DXF 2D
 - asso2inc.dxf
 Montaggi
 - Asso-C-PLAF rev0.pdf



Asso "C" 2 - small - ceiling

The lighting of indoor spaces must pace the attention on visual wellbeing, aesthetic quality and energy savings. The new LED sources allow high lighting levels and excellent colour rendering.

This is why Fosnova extended its range of top-sellers such as Asso, by adding versions with different sizes and adapters in order to adjust to different cable tracks, including versions with adjustable recessed spotlights, all fitting high-performance LEDs, a new technology that handles colour saturation in a more natural and homogenous manner. The brand new Asso spotlights prove to be perfect for all those spaces where reflexes, transparencies and the quality of whites and colours play a key role.

The range is complete and includes fixtures capable of fulfilling any interior lighting need. In a single body, you can use different optics and LEDs with different power outputs, keeping aesthetic continuity, despite differencing the amount of light: all these requirements make the fixture an excellent choice for retailing, architectural and museum lighting applications

Frame: made of aluminium Asso housing: in die-cast aluminium. Reflector: in die-cast polished aluminium, high efficiency and anti-glare.

Coating: Power-coated with a UV-resistant polyester paint.

Regulations: Manufactured in accordance with EN 60598-1-CEI 34.21 standards. Degree of protection in accordance with EN60529 standards.

Luminous flux maintenance L80B20: 50.000h.

Power factor >0.9

Photobiological safety class: Exempt group

Code	Gear	Kg	Lumen Output-K-CRI	WTot	Colour
22189310-00	CLD	3.03	LED COB2x-1455lm-3000K-18°-CRI>80	26 W	WHITE
22189310-1241	CLD CELL-D-D	1.70	LED COB2x-1455lm-3000K-18°-CRI>80	26 W	WHITE
22189310-68	CLD	1.70	LED COB2x-1556lm-4000K-18°-CRI>80	26 W	WHITE
22189310-6841	CLD CELL-D-D	1.70	LED COB2x-1556lm-4000K-18°-CRI>80	26 W	WHITE
22189311-00	CLD	1.70	LED COB2x-1469lm-3000K-26°-CRI>80	26 W	WHITE
22189311-1241	CLD CELL-D-D	1.70	LED COB2x-1469lm-3000K-26°-CRI>80	26 W	WHITE
22189311-68	CLD	1.70	LED COB2x-1571lm-4000K-26°-CRI>80	26 W	WHITE
22189311-6841	CLD CELL-D-D	1.70	LED COB2x-1571lm-4000K-26°-CRI>80	26 W	WHITE
22189312-00	CLD	1.70	LED COB2x-1401lm-3000K-38°-CRI>80	26 W	WHITE
22189312-1241	CLD CELL-D-D	1.70	LED COB2x-1401lm-3000K-38°-CRI>80	26 W	WHITE
22189312-68	CLD	1.70	LED COB2x-1499lm-4000K-38°-CRI>80	26 W	WHITE
22189312-6841	CLD CELL-D-D	1.70	LED COB2x-1499lm-4000K-38°-CRI>80	26 W	WHITE
22189313-00	CLD	2.99	LED COB2x-1413lm-3000K-63°-CRI>80	26 W	WHITE
22189313-1241	CLD CELL-D-D	1.70	LED COB2x-1413lm-3000K-63°-CRI>80	26 W	WHITE
22189313-68	CLD	1.70	LED COB2x-1512lm-4000K-63°-CRI>80	26 W	WHITE
22189313-6841	CLD CELL-D-D	3.00	LED COB2x-1512lm-4000K-63°-CRI>80	26 W	WHITE

The reported luminous flux is the flux emitted by the light source with a tolerance of ± 10% compared to the indicated value. The W tot column indicates the total wattage absorbed by the system without exceeding 10% of the indicated