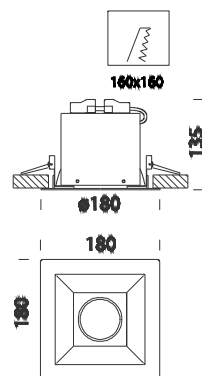
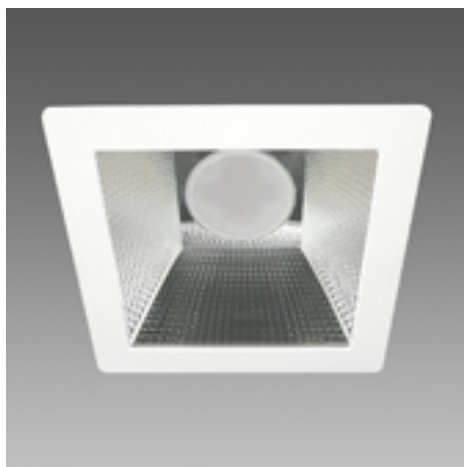


Velvet 2 - DLM FLEX 2000



Code	Gear	Kg	Colour	Dimensions	W Tot	lamp
22160213-00	CLD CELL	1.10	white	180x180x135	18	LED 2000-2000lm-3000K-CRI 80
22160214-00	CLD CELL	1.10	white	180x180x135	16	LED DLMi 2000-2000lm-4000K-CRI 80 LED 2000-2000lm-4000K-CRI 80

A range of recessed spotlights with a square shape incorporating latest generation DLMi LED modules.

This line of products was created to meet the needs of lighting systems used for the decoration of interior spaces that are becoming more demanding every day.

Lighting systems are required to be energy-efficient and flexible in order to define spaces according to different needs, offer striking visual impact, ensure low management costs, and guarantee long service life. Lighting systems should be able to create light effects, accent light and ambient light.

There are many elements of an interior design capable of creating the right ambiance in a store, in an exhibition space and in a home.

Housing: in die cast aluminium with glass

Reflector: dark light optics in high gloss, anti-glare aluminium to optimise light efficiency.

Installation: is equipped with galvanised steel support brackets, with housing for springs for attachment to the false ceilings.

Painting: dust painted, using polyester epoxy paint to withstand UV rays.

Standard supply: Includes adjustable steel bracket.

Regulations: Manufactured in accordance with standards EN60598 - CEI 34 -21. Degree of protection in accordance with standards EN60529.

LED: high-efficiency light sources 2000lm - 18W - 3000/4000K - 70° - CRI 80

Power factor: ≥ 0.9

Photobiological safety class: Exempt group.

Luminous flux maintenance 70%: 60.000h (L70B50).

recessed Ø 160/175mm