

Sylon C50

This line of vertically as well as horizontally adjustable recessed spotlights features easy lamp replacement; additionally, after removing the movable parts, the transformer can be replaced through the port in the outside clip.

Housing: Die-cast zamak, with a steel bracket holding the terminal block. Includes springs for recessed mounting.

Coating: Powder coated with polyester epoxy paint, UV-resistant.

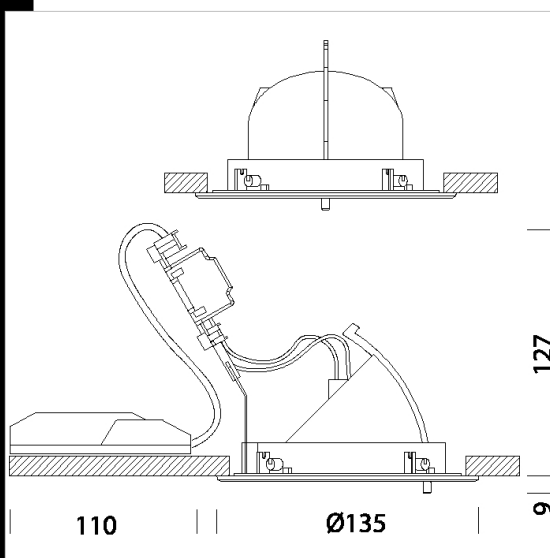
Regulations: Manufactured in accordance with standards EN60598 – 1 - CEI 34.21. Degree of protection in accordance with standards EN60529.

Power factor: 0.95

Photobiological safety class: Exempt group.

Luminous flux maintenance 70%: 50.000h (L70B50).

recessed Ø 118mm



Code	Gear	Kg	Lumen Output-K-CRI	WTot	Colour
22086410-00	CLD CELL-D	0.51	LED-1340lm-3000K-40°-CRI>80	14 W	WHITE
22086430-00	CLD CELL-D	0.51	LED-1340lm-3000K-40°-CRI>80	14 W	BLACK



Download

DXF 2D
- sylonc50.dxf

The reported luminous flux is the flux emitted by the light source with a tolerance of ± 10% compared to the indicated value. The W tot column indicates the total wattage absorbed by the system without exceeding 10% of the indicated