

## Ceiling Cubic

Housing: die-cast aluminium, powder painted using acrylic resin based paint resistant to UV rays, previously subjected to chromium-plating. Wall-mounted versions with diffuser positionable at 350°.

Diffuser: shockproof, pressed crystal glass. Coloured versions with sand blasted and liquid painted crystal using paints that withstand high temperatures.

Equipment: fitting supplied without lamps.

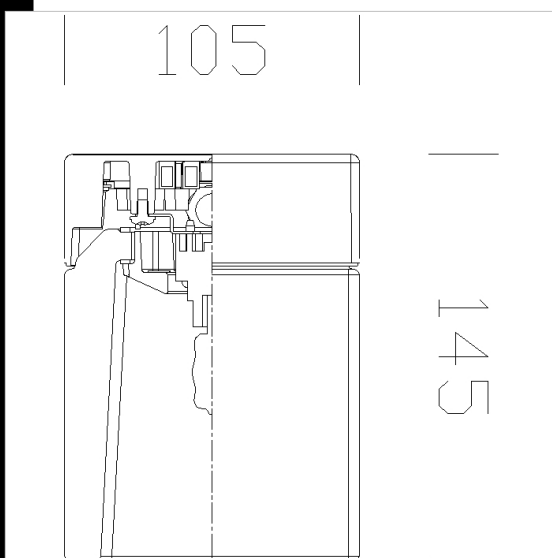
Wiring: using Teflon wires resistant to high temperatures; network connecting terminals with maximum permitted cross-section of the conductors of 2.5 mm<sup>2</sup>.

Standards: products compliant with applicable CEI 34-21, CEI EN 60598-1, CEI EN 60598-2-1 standards.

### Download

DXF 2D  
- 60115.dxf

Montaggi  
- CUBIC 07-07.pdf



Code	Gear	Kg	Lumen-K-CRI	WTot	Base	Colour
22060187-00	S	1.70	ALO max 60---	0 W	G9	BLUE
22060161-00	S	1.70	ALO max 60---	0 W	G9	LIGHT BLUE
22060196-00	S	1.70	ALO max 60---	0 W	G9	AMBER
22060162-00	S	1.70	INC max 60---	0 W	E14	LIGHT BLUE
22060142-00	S	1.70	ALO max 60---	0 W	G9	GREEN
22060152-00	S	1.70	ALO max 60---	0 W	G9	YELLOW
22060143-00	S	1.70	INC max 60---	0 W	E14	GREEN
22060114-00	S	2.00	ALO max 60---	0 W	G9	WHITE
22060136-00	S	1.70	ALO max 60---	0 W	G9	AQUAMARINE
22060115-00	CLD S	2.00	INC max 60---	0 W	E14	WHITE
22060192-00	S	1.70	INC max 60---	0 W	E14	AMBER
22060124-00	S	1.70	ALO max 60---	0 W	G9	PINK
22060171-00	S	2.00	INC max 60---	3 W	E14	SILVER
22060130-00	S	1.70	INC max 60---	0 W	E14	AQUAMARINE
22060156-00	S	1.70	INC max 60---	0 W	E14	YELLOW
22060174-00	CLD S	2.00	ALO max 60---	0 W	GU10	GREY
22060181-00	S	1.70	INC max 60---	0 W	E14	BLUE
22060125-00	S	1.70	INC max 60---	0 W	E14	PINK

The reported luminous flux is the flux emitted by the light source with a tolerance of ± 10% compared to the indicated value. The W tot column indicates the total wattage absorbed by the system without exceeding 10% of the indicated