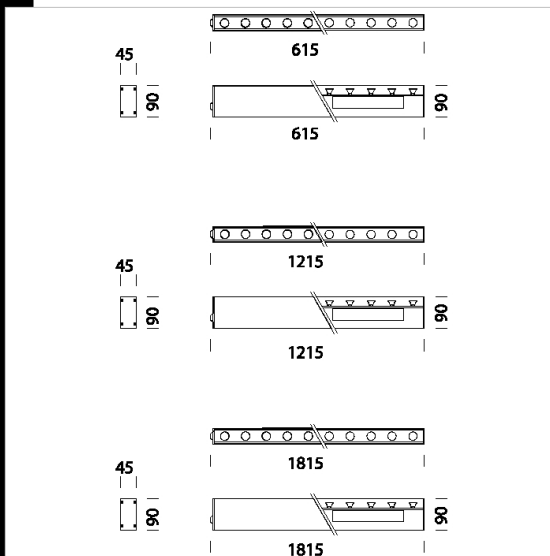
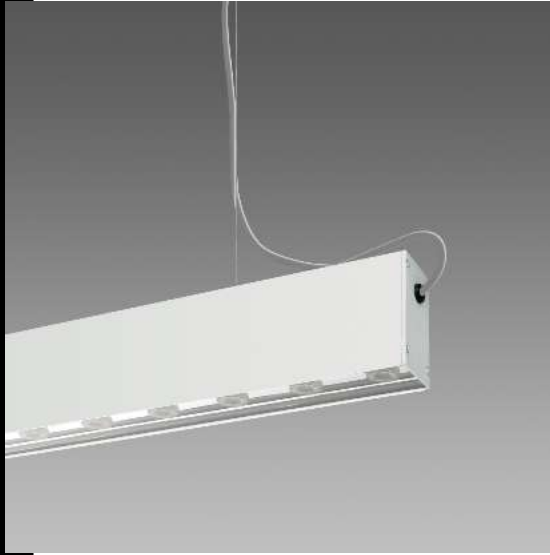


## Maxi Liset IP40 LED

Housing: made of oxidized extruded aluminium.  
 Heads: in die-cast aluminium with polyester coating for exteriors.  
 Diffuser: made of glass  
 Regulations: Produced according to applicable EN60598-1 CEI 34-21 standards, degree of protection according to EN 60529 standards.  
 Power factor: >0,95  
 Luminous flux maintenance 70% 50000h (L70B50)  
 Photobiological safety class: exempt group EN62471.



Code	Gear	Kg	Lumen Output-K-CRI	WTot	Colour
22019173-00	CLD CELL	1,50	LED-170lm-4100k-CRI 80	83 W	OXIDIZED
22019171-00	CLD CELL	1,50	LED-170lm-4100k-CRI 80	27 W	OXIDIZED
22019172-00	CLD CELL	1,50	LED 20x2.3W white-170lm-4100k-CRI 80	52 W	OXIDIZED

### Accessori



- Ceiling suspension



- Ceiling connection



- Ceiling suspension



- Powered suspension 3-5 p



- Bracket - Maxi Liset



- Alignment joint - Maxi Liset



- Bracket - Maxi Liset



- Adjustable Bracket - Maxi Liset



- Bracket for Omnitrack - Maxi Liset

### Download

DXF 2D  
 - maxilisetip40led.dxf

### Montaggi

- maxilisetacc.pdf  
 - maxilisetip40.pdf

The reported luminous flux is the flux emitted by the light source with a tolerance of  $\pm 10\%$  compared to the indicated value. The W tot column indicates the total wattage absorbed by the system without exceeding 10% of the indicated