



877 Comfort T8 - matt scored

Housing: in steel sheet.

Optics: Matt louvre.

Coating: acrylic anionic electrocoating, white, UV-stabilized

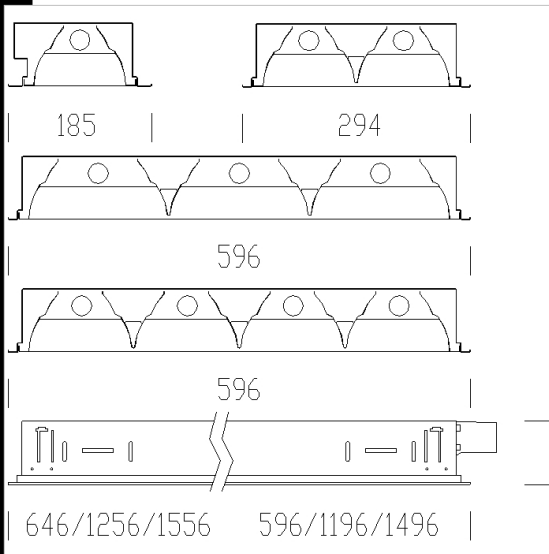
Electric gear: automatic line and 100% tested on the line. 230V/50Hz (CNR) power supply. Hard wire, 0.50 sq mm cross section and PVC-HT sheath resistant up to 90°, according to CEI 20-20 standards. Quick connector +T with maximum allowed lead cross section of 2.5 sq mm.

Equipment: Snap fastening optics, which remain attached by safety cords.

6.3A protection fuse for the 873 and 875 versions.

Supplied without brackets for contact mounting on the cross T structure. When not contact mounted, use brackets, acc. 901.

Regulations: Produced according to applicable EN60598-1 CEI 34-21 standards, degree of protection according to EN 60529 standards.



Code	Gear	Kg	Lumen-K-CRI	WTot	Base	Colour
151208-08	CEL	3.46	FL 4x18-1350lm-4000K-Ra 1b	73 W	G13	WHITE
151203-08	CEL	2.23	FL 2x18-1350lm-4000K-Ra 1b	38 W	G13	WHITE
151209-08	CEL	6.60	FL 4x36-3350lm-4000K-Ra 1b	146 W	G13	WHITE
151209-09	CEL-E	7.20	FL 4x36-3350lm-4000K-Ra 1b	149 W	G13	WHITE
151200-08	CEL	1.20	FL 1x18-1350lm-4000K-Ra 1b	20 W	G13	WHITE
151200-09	CEL-E	2.00	FL 1x18-1350lm-4000K-Ra 1b	20 W	G13	WHITE
151205-08	CEL	4.90	FL 2x58-5200lm-4000K-Ra 1b	113 W	G13	WHITE
151203-09	CEL-E	3.00	FL 2x18-1350lm-4000K-Ra 1b	41 W	G13	WHITE
151205-09	CEL-E	5.40	FL 2x58-5200lm-4000K-Ra 1b	116 W	G13	WHITE
151202-09	CEL-E	4.50	FL 1x58-5200lm-4000K-Ra 1b	59 W	G13	WHITE
151207-09	CEL-E	6.50	FL 3x36-3350lm-4000K-Ra 1b	110 W	G13	WHITE
151206-09	CEL-E	4.40	FL 3x18-1350lm-4000K-Ra 1b	58 W	G13	WHITE
151206-08	CEL	3.90	FL 3x18-1350lm-4000K-Ra 1b	55 W	G13	WHITE
151201-09	CEL-E	4.00	FL 1x36-3350lm-4000K-Ra 1b	40 W	G13	WHITE
151202-08	CEL	4.00	FL 1x58-5200lm-4000K-Ra 1b	56 W	G13	WHITE
151204-09	CEL-E	4.60	FL 2x36-3350lm-4000K-Ra 1b	73 W	G13	WHITE
151201-08	CEL	3.40	FL 1x36-3350lm-4000K-Ra 1b	37 W	G13	WHITE
151204-08	CEL	4.10	FL 2x36-3350lm-4000K-Ra 1b	70 W	G13	WHITE
151208-09	CEL-E	4.00	FL 4x18-1350lm-4000K-Ra 1b	76 W	G13	WHITE
151207-08	CEL	6.00	FL 3x36-3350lm-4000K-Ra 1b	108 W	G13	WHITE

Accessories



- 203 Fuse



- 320 steel safety cord



- 898 adjustable bracket

The reported luminous flux is the flux emitted by the light source with a tolerance of $\pm 10\%$ compared to the indicated value. The W tot column indicates the total wattage absorbed by the system without exceeding 10% of the indicated