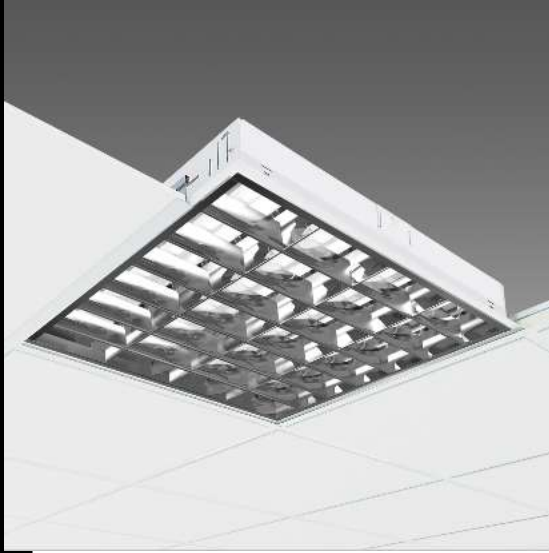
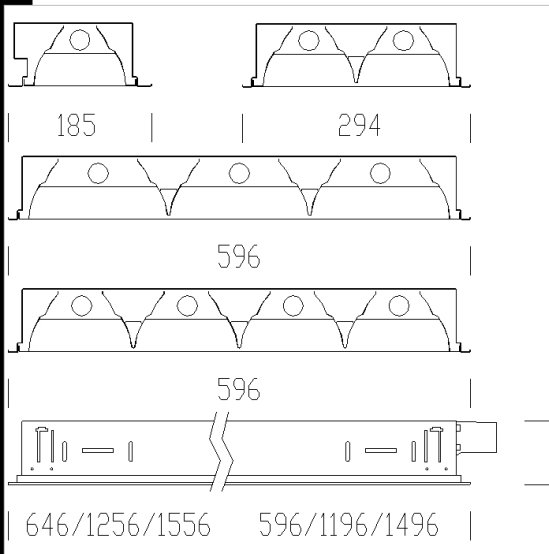


873 Comfort T8 - high-gloss 99.99



Housing: in steel sheet.  
 Louvre: Dark light double parabolic louvres, in high-gloss plated aluminium 99.99. Anti-dazzle and anti-iridescence, very low luminance. PVD treatment.  
 Coating: acrylic anionic electrocoating, white, UV-stabilized  
 Electric gear: automatic line and 100% tested on the line. 230V/50Hz (CNR) power supply. Hard wire, 0.50 sq mm cross section and PVC-HT sheath resistant up to 90°, according to CEI 20-20 standards. Quick connector +T with maximum allowed lead cross section of 2.5 sq mm.  
 Equipment: Snap fastening optics, which remain attached by safety cords.  
 6.3A protection fuse for the 873 version.  
 Supplied without brackets for contact mounting on the cross T structure. When not contact mounted, use brackets, acc. 901.  
 Regulations: Produced according to applicable EN60598-1 CEI 34-21 standards, degree of protection according to EN 60529 standards.



**Download**  
 DXF 2D  
 - 873\_75\_77.dxf  
 3DS  
 - 873\_2x36.3ds  
 3DM  
 - 873\_2x36.3dm  
 Montaggi  
 - comfort8.pdf

Code	Gear	Kg	Lumen-K-CRI	WTot	Base	Colour
151005-09	CELF-E	5.50	FL 2x58-5200lm-4000K-Ra 1b	116 W	G13	WHITE
151001-09	CELF-E	4.00	FL 1x36-3350lm-4000K-Ra 1b	40 W	G13	WHITE
151005-08	CEL-F	4.90	FL 2x58-5200lm-4000K-Ra 1b	113 W	G13	WHITE
151006-09	CELF-E	4.40	FL 3x18-1350lm-4000K-Ra 1b	58 W	G13	WHITE
151007-09	CELF-E	6.60	FL 3x36-3350lm-4000K-Ra 1b	110 W	G13	WHITE
151009-09	CELF-E	7.20	FL 4x36-3350lm-4000K-Ra 1b	149 W	G13	WHITE
151002-09	CELF-E	4.60	FL 1x58-5200lm-4000K-Ra 1b	59 W	G13	WHITE
151003-09	CELF-E	2.70	FL 2x18-1350lm-4000K-Ra 1b	41 W	G13	WHITE
151009-08	CEL-F	6.58	FL 4x36-3350lm-4000K-Ra 1b	146 W	G13	WHITE
151006-08	CEL-F	3.90	FL 3x18-1350lm-4000K-Ra 1b	55 W	G13	WHITE
151004-09	CELF-E	4.70	FL 2x36-3350lm-4000K-Ra 1b	73 W	G13	WHITE
151004-08	CEL-F	4.10	FL 2x36-3350lm-4000K-Ra 1b	70 W	G13	WHITE
151002-08	CEL-F	4.00	FL 1x58-5200lm-4000K-Ra 1b	56 W	G13	WHITE
151000-08	CEL-F	1.61	FL 1x18-1350lm-4000K-Ra 1b	20 W	G13	WHITE
151008-08	CEL-F	3.46	FL 4x18-1350lm-4000K-Ra 1b	73 W	G13	WHITE
151008-09	CELF-E	3.88	FL 4x18-1350lm-4000K-Ra 1b	76 W	G13	WHITE
151007-08	CEL-F	6.00	FL 3x36-3350lm-4000K-Ra 1b	108 W	G13	WHITE
151001-08	CEL-F	3.40	FL 1x36-3350lm-4000K-Ra 1b	37 W	G13	WHITE
151003-08	CEL-F	2.23	FL 2x18-1350lm-4000K-Ra 1b	38 W	G13	WHITE

Accessories



- 203 Fuse



- 320 steel safety cord



- 898 adjustable bracket



- 901 adjustable bracket

The reported luminous flux is the flux emitted by the light source with a tolerance of ± 10% compared to the indicated value. The W tot column indicates the total wattage absorbed by the system without exceeding 10% of the indicated