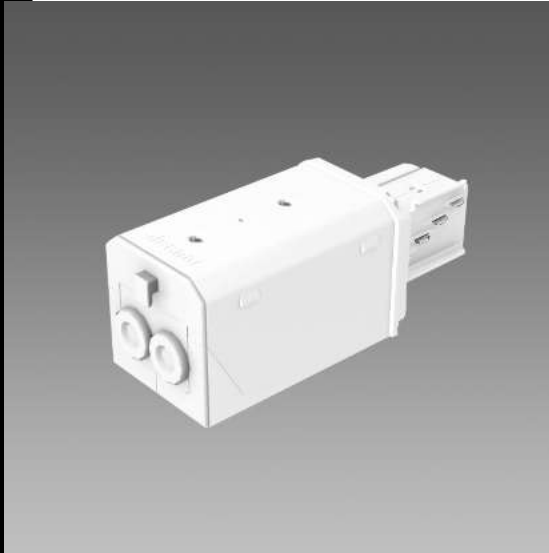




3° IP
IK

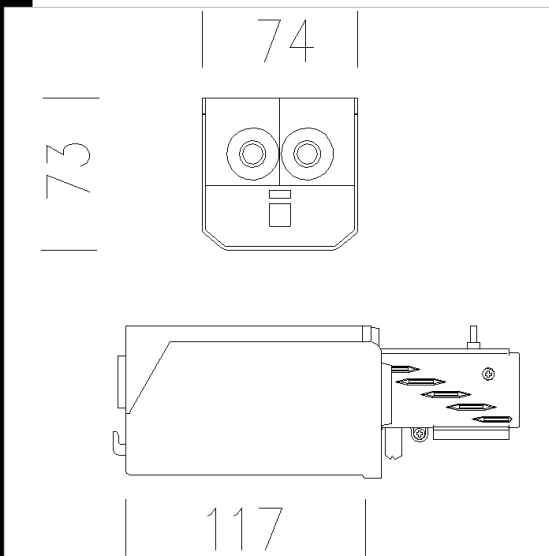
Download

DXF 2D
- 6105.dxf



6105 Connection

In nylon with phosphorous bronze contacts. To be used always to power the track. Maximum 2.5 sqmm permitted lead cross section



Code	Kg	WTot	Colour
132810-00	0.02	0 W	WHITE

Products



- 6101 Canale Elesystem: 5

The reported luminous flux is the flux emitted by the light source with a tolerance of $\pm 10\%$ compared to the indicated value. The W tot column indicates the total wattage absorbed by the system without exceeding 10% of the indicated