

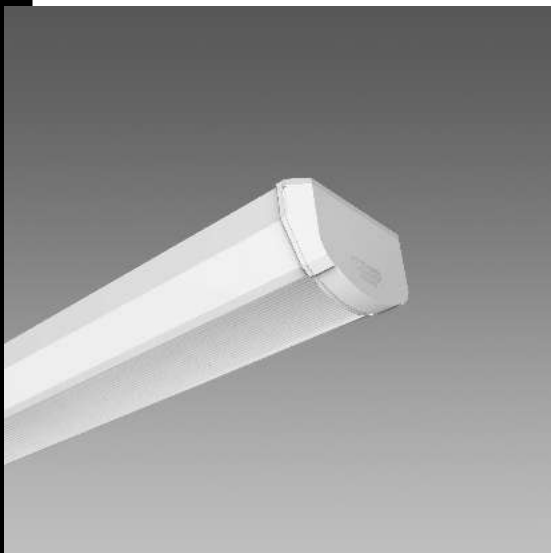


Download

DXF 2D
- 601led.dxf

Montaggi
- 601.pdf

BIM
- 601 Disanlens - 20200616.zip



601 Disanlens

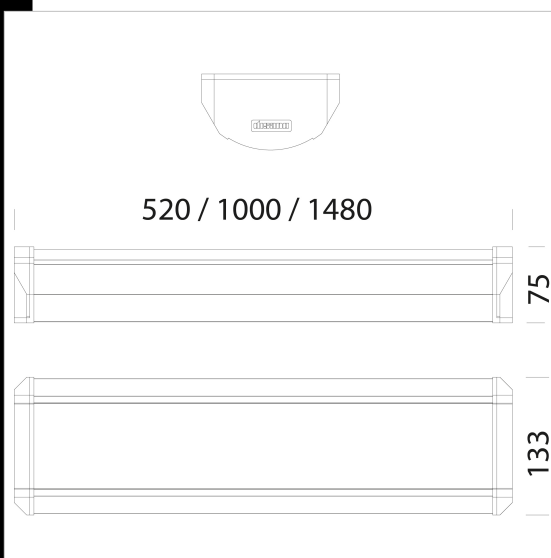
New developments were also introduced in some of the best sellers of Disano's interior lighting range. The new Disanlens ceiling lamp represents the ideal solution for the relamping of spaces where optimal light distribution is key for ensuring maximum visual comfort. Thanks to its original design, specifically studied to be inserted into large commercial spaces or in offices and school buildings, Disanlens is the best solution for excellent light distribution.

LED sources allow savings that reach 30% compared to traditional T5 and even 60% compared to the T8 lamps.

With a life of 50000 hours, Disanlens meets the needs of systems that require long ON times.

With the new Disanlens, schools, offices and healthcare facilities can update their lighting systems, saving energy with higher light quality. The ceiling lamp features the best technologies and latest generation LED sources

Housing: in extruded aluminium with closing ends. Diffuser: in shatter-proof, self-extinguishing and UV-stabilised V2 polycarbonate. Smooth and dust-proof on the outside, and multiple grooves on the inside to increase light distribution. Coating: smooth, white powder coating. Equipment: silicone rubber gasket; outer screws in stainless steel. IP44 Power factor 0.9. Luminous flux maintenance 80%: 50.000h (L80B20). Photobiological safety class: Exempt group.



Code	Gear	Kg	Lumen Output-K-CRI	WTot	Colour
115594-00	CLD	1,49	LED-1947lm-4000K-CRI 80	15 W	WHITE
115595-00	CLD	2,71	LED-3894lm-4000K-CRI 80	29 W	WHITE
115596-00	CLD	3,89	LED-5517lm-4000K-CRI 80	43 W	WHITE
115594-12	CLD CELL-D	2,71	LED-1947lm-4000K-CRI 80	15 W	WHITE
115595-12	CLD CELL-D	3,71	LED-3894lm-4000K-CRI 80	28 W	WHITE
115596-12	CLD CELL-D	4,07	LED-5517lm-4000K-CRI 80	43 W	WHITE
115594-19	CLD CELL	2,71	LED-1947lm-4000K-CRI 80	15 W	WHITE
115595-19	CLD CELL	3,44	LED-3894lm-4000K-CRI 80	31 W	WHITE
115596-19	CLD CELL	4,71	LED-5517lm-4000K-CRI 80	44 W	WHITE
115594-07	CLD-E	1,99	LED-1947lm-4000K-CRI 80	18 W	WHITE
115595-07	CLD-E	3,29	LED-3894lm-4000K-CRI 80	32 W	WHITE
115596-07	CLD-E	4,49	LED-5517lm-4000K-CRI 80	46 W	WHITE

Accessori



- 588 bracket

The reported luminous flux is the flux emitted by the light source with a tolerance of $\pm 10\%$ compared to the indicated value. The W tot column indicates the total wattage absorbed by the system without exceeding 10% of the indicated