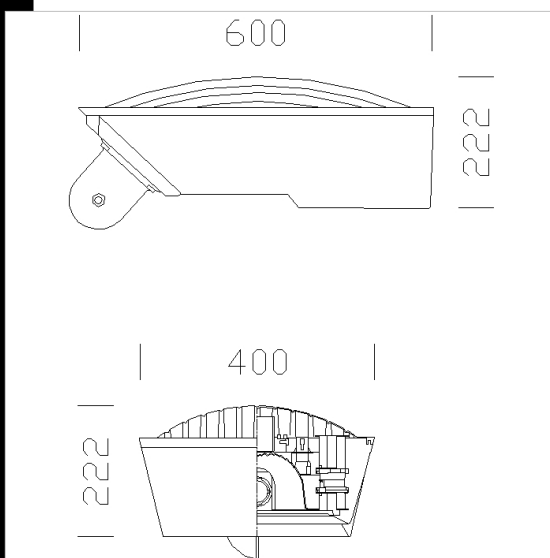


IK07

Download

- DXF 2D
- 1240.dxf
- 3DS
- disano_1240_torpedo.3ds
- 3DM
- disano_1240_torpedo.3dm
- Montaggi
- 1240_4_torpedo.pdf
- torpedo_orient.dxf



1240 Torpedo

Housing: In die-cast aluminium.
 Reflector: In anodized and polished 99.85 aluminium.
 Diffuser: Tempered protective scored glass, 5 mm thick, impact and thermal shock resistance, anti-dazzle.
 Coating: Graphite grey or frosted silver polyester powder coating applied, resistant to corrosive and saline environments.
 Lampholder: In ceramics, with silver contacts. Socket E27.
 Electric gear: 230V/50Hz power supply. Silicone wire terminated with quick-connect clamps in admiralty brass, with glass braid, 1.0 sqmm cross section. 2P terminal block with maximum allowed lead cross section: 2.5 sqmm.
 Mounting: On wall or Ø 60 mm pole.
 Regulations: Produced according to applicable EN60598-1 CEI 34-21 standards, IP44IK08 degree of protection according to EN 60529 standards. It has been granted the ENEC European Certificate of Conformity. Insulation Class II.
 Non-polluting louvre, ideal for installation in UNI10819 zone 1 (with accessories 88 and 1251).
 Wind surface: 590 sqcm.
 On request: version with COSMOPOLIS white 60w/6850lm/2800k.

Code	Gear	Kg	Lumen-K-CRI	WTot	Base	Colour
427862-00	CNR-L	10.30	SAP-T 150-17200lm-2000K-Ra 4	157 W	E40	GREY9007/GRAF
427865-00	CNR-L	10.10	JM-E 150-14000lm-4000K-Ra 1b	157 W	E27	GREY9007/GRAF
427863-00	CNR-L	11.30	SAP-T 250---	277 W	E40	GREY9007/GRAF
427866-00	CNR-L	10.10	CDO-TT 150-13500lm-2800K-Ra 1b	157 W	E40	GREY9007/GRAF
427861-00	CNR-L	9.30	SAP-T 100-9000lm-2000K-Ra 4	1020 W	E40	GREY9007/GRAF
427860-00	CNR-L	9.30	SAP-T 70-6000lm-2000K-Ra 4	83 W	E27	GREY9007/GRAF
427864-00	CNR-L	9.30	JM-E 70-5600lm-4000K-Ra 1b	82 W	E27	GREY9007/GRAF

Accessories



- 72 wall mount



- 151 Cube Lione



- 406 Short 'Aliante' arm



- 407 Double 'Aliante' arm



- 456 wall connection



- 455 small pole connection

The reported luminous flux is the flux emitted by the light source with a tolerance of ± 10% compared to the indicated value. The W tot column indicates the total wattage absorbed by the system without exceeding 10% of the indicated